



Inventory process in the Republic of Moldova. Applied methodologies, sources of activity data.

Marius Țăranu

*Coordinator of National GHG Inventory,
Climate Change Office, Ministry of Environment*

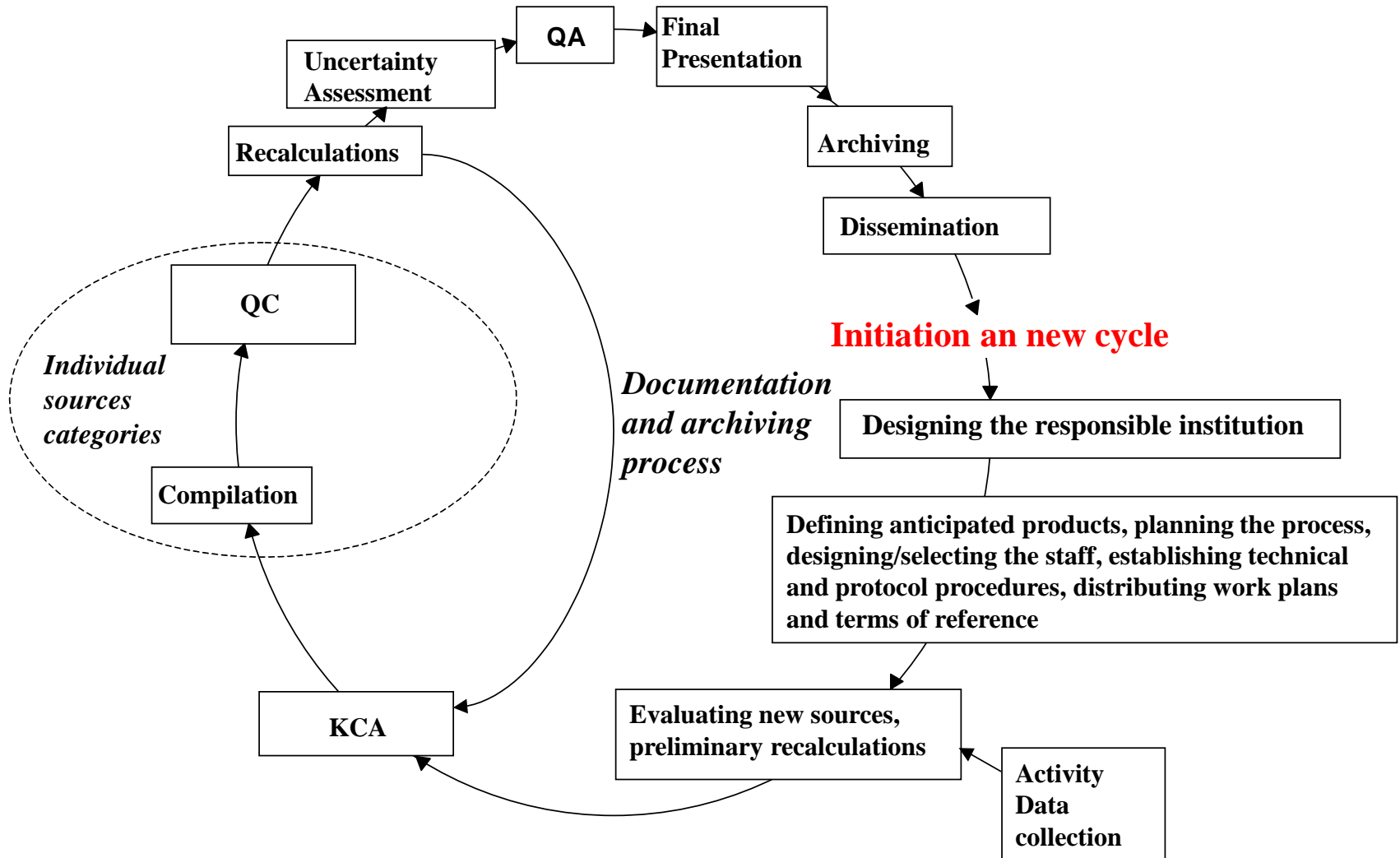
Meeting dedicated to peer review on national GHG inventory –
Energy Sector, Chișinău, 2 November 2015

The main products of the inventory process in the Republic of Moldova

The main products of the inventory process (the current cycle implemented in the frame of BUR1+NC4 Project, covers the period since July 2014 to June 2017) are as follow:

1. NIR: 1990–2013, GHG Sources and Sinks in the Republic of Moldova;
2. National GHG Inventory for 1990-2013 periods, prepared and reported using the NAIIS;
3. Chapter 2 “National GHG Inventory for 1990-2013” of the 1stBUR;
4. Report on the National GHG Inventory System of the Republic of Moldova (developed in the frame of LECB Programme).
5. NIR: 1990–2015, GHG Sources and Sinks in the Republic of Moldova;
6. National GHG Inventory for 1990-2015 periods, prepared and reported using the NAIIS and/or alternatively the IPCC 2006 inventory software;
7. Chapter 2 “National GHG Inventory for 1990-2015” of the 4thNC.

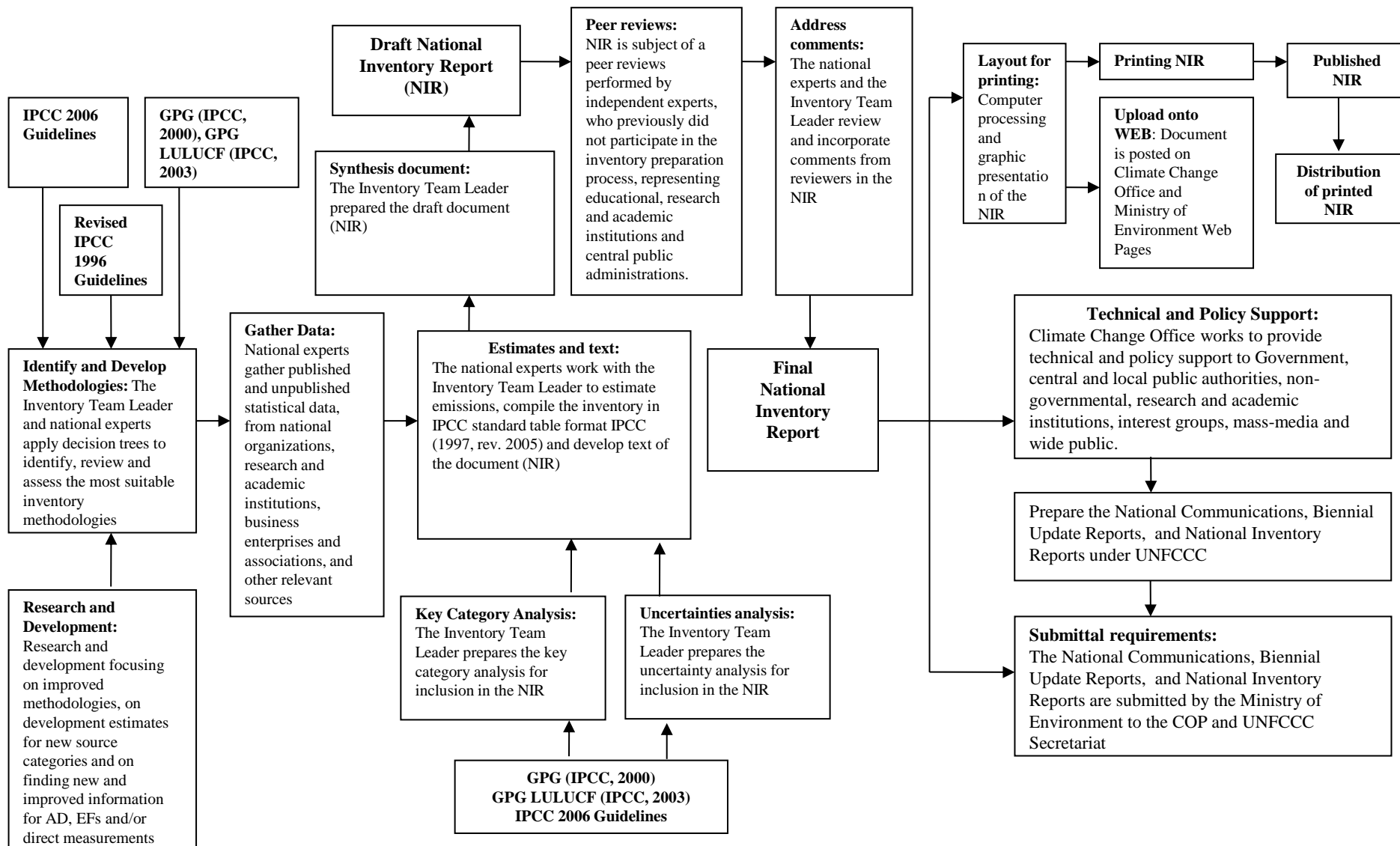
GHG Inventory as an iterative cycle



The most recent inventory cycle (July 2014-September 2015) follow six basic steps



Inventory Process in the Republic of Moldova as a scheme



Main data sources

- ❖ **National Statistic information** (Statistical Yearbooks of the Republic of Moldova and ATULBD);
- ❖ **Sector Statistic Reports** (Energy Balances, Natural resources and Environment in the RM, the Activity of small agricultural producers in the RM, other sectorial statistical reports);
- ❖ **Departmental Reports** (National Reports „State of Environment in the Republic of Moldova”, Yearbook of the State Ecological Inspectorate „Environment protection in the RM”, NAER/ANRE Activity Annual Reports, etc.)
- ❖ **Direct source information:** as response to official letters sent by CCO of the MoEN, i.e.: **state enterprises** (SA TERMoeLECTRICA (CHP-1 JSC, CHP-2 JSC, Termocom JSC), CHP-North JSC, RED-North JSC, RED-North-West JSC, “Moldelectrica” SOE, Glass Factory No. 1, etc.); **municipal enterprises** („REGIA AUTOSALUBRITATE”); **private enterprises** (Lafarge Cement (Moldova) JSC, “MACON” JSC, I.C.S. “RED UNION FENOSA” JSC, “MOLDOVAGAZ” JSC, „Glass Container”, etc.);

Main data sources (cont.)

- ❖ **Departmental information:** as response to official letters sent by CCO Central Public Authorities and subordinated institutions (MEC, CS/MF, MAFI, MTRI, MITC, MH, MD; SHS, SEI and Agency „Moldsilva“ of the MoEN); Central Administrative Authorities (National Bureau of Statistics and Agency for Land and Cadastral Relations);
- ❖ **Scientific reports and publications** (National Agency for Rural Development (ACSA), Institute of Pedology, Agrochemistry and Soil Protection “N. Dimo”, Forestry Research and Management Institute (ICAS), Institute of Power Engineering of the ASM);
- ❖ **Policy, Legal and Normative acts** approved and available on-line on: <http://lex.justice.md/>);
- ❖ **International Statistical publications and reports** (**FAO** database, **IBNET** database, **WB** database, etc.).

Methodological guidance used

- Revised 1996 IPCC Guidelines for National Greenhouse Gas Inventories (IPCC, 1997);
- IPCC Good Practice Guidance and Uncertainty Management in National Greenhouse Gas Inventories (IPCC, 2000);
- IPCC Good Practice Guidance for Land Use, Land-Use Change and Forestry (IPCC, 2003);
- IPCC 2006 Guidelines for National Greenhouse Gas Inventories (IPCC, 2006);
- EMEP/EEA Air Pollution Emission Inventory Guidebook 2013, Technical guidance to prepare national emission inventories. (European Environment Agency, 2013);
- Recent Annex I Parties NIRs (2012/2013 inventory submissions):
 - Austria, Australia, Switzerland, Italy, Germany, Portugal, Hungary, Russian Federation, etc.

Emission Factors Used

In most of cases, IPCC defaults were used. However, it is ongoing the process of identification potential studies which can offer country specific (CS) emission factors (EFs) in a scientific and consistent manner:

- CS EFs were used for categories: 2A1 Cement production (CO_2), 2A3 Limestone and dolomite use (CO_2), 2A7 Brick production (CO_2), 4A Enteric fermentation (CH_4), 4B Manure management (CH_4 and N_2O), 5A Forestland (CO_2), 5B Croplands (CO_2), 5C Grassland (CO_2) and 6A Solid Waste Disposal on Land (CH_4);
- Tier 2 methodologies were used for categories: 2A1 Cement Production, 2C1 Steel Production, 2F HFCs and SF_6 consumption, 4A Enteric Fermentation, 4B Manure Management, 5A Forestland, 5C Grassland, 6A Solid Waste Disposal on Land, and Memo Items “International Bunkers” (Aviation);
- A CS methodology (equivalent to Tier 3) was used for evaluating CO_2 emissions from agricultural soils (5B Croplands).

Documentation and archiving information

- ❖ All collected/obtained information (national and international statistical yearbooks, reports, forms, official letters, scientific reports and publications, policy, legal and normative acts, etc.) are documented and stored by the Climate Change Office on electronic and hard support;
- ❖ The collected information is introduced in an electronic database, which is managed by Climate Change Office with the purpose of GHG Inventory development on regular basis.
- ❖ The electronic database is actualized at the start of each inventory cycle.

Dissemination of information

❖ **National Communications** and **National Inventory Reports** are available on-line on the **UNFCCC Secretariat** webpage: http://unfccc.int/national_reports/non-annex_i_natcom/items/2979.php, respectively on the **Climate Change Office** webpage:

<http://www.clima.md/lib.php?l=ro&idc=81&>; and
<http://www.clima.md/lib.php?l=ro&idc=82&>;

❖ Information on **national GHG emission** are available on-line, in .pdf and .xls format on the **UNFCCC Secretariat** webpage:
<http://unfccc.int/di/DetailedByParty/Event.do?event=go>,
http://unfccc.int/files/ghg_data/ghg_data_unfccc/ghg_profiles/application/pdf/mda_ghg_profile.pdf, respectively in .xls format on the **Climate Change Office** website:

<http://www.clima.md/libview.php?l=ro&idc=264&id=3628>.



Thank you for attention!

Contact information:

marius.taranu@mediu.gov.md

Tel/Fax: 022 232247
